

Lower Beverley Lake Association  
*Founded in 1932*

# 2014 LOON CALL



LBLA  
PO Box 204  
Delta ON  
Canada  
K0E 1G0  
[www.lbla.net](http://www.lbla.net)

## LBLA Executive & Volunteers:

### **President**

Lynne Jeffries

### **Vice President**

Sharon Olivo

### **Past President**

Dave Champagne

### **Finance & Membership**

Betty Penstone

& Susan Seebeck

### **Secretary**

Barb Kirkham

### **Director at large**

Fred Olivo

### **Auditor**

Ed Van Voorhis

### **Web master**

Lynne Jeffries

### **Clean-up day**

Sandy Ellis

### **Water quality**

Dave Johnson

### **Shoal Markers**

Fred Olivo, Sharon Olivo,  
John Truysen, Clyde Bressler,  
Dave Johnson

### **Water quantity**

John Truysen

### **Newsletter**

Louise Mantha

## MESSAGE FROM THE PRESIDENT

A burning question as I begin my second year as president of the lake association is "Why do you join the lake association?" Or more importantly "Why do some cottagers **NOT** join the lake association?" We have about 400 residences on Lower Beverley Lake yet our membership hovers between 150 and 160. I recently polled my friends on the lake and asked them why they join. They responded: civic duty, support of the water monitoring, to have a say in how the lake is managed, to support a lake advocacy group ensuring one is in place should the need arise to present our position or mount a campaign, to meet new people on the lake, family tradition, a strong interest in ensuring the health of the lake, or to be stewards of this very special place.

I can guess that answers to my second question probably include the following: I don't want to get involved, heard they are involved in septic system stuff and don't want to be involved in that, don't want to be part of any watchdog group, have better uses for my \$20.

Here are my responses. While we are always looking for volunteers (many hands do lighten the load), no one is forced to work with any group or on any event they do not want to. My personal belief is that people should follow their passion. If you are interested in lake quality, boat safety, social events, youth, or other subjects, email me and we can discuss your interest. But I will never try and force people to be involved. Let me address some of your possible issues.

**Septic Systems:** This is a difficult subject. Science shows that a failed septic system is bad for the lake. Yet members of the lake association are not creeping around trying to figure out whose systems need to be inspected. That is the Township's job and it is presently setting up a system of septic inspections, including the islands.

**Watchdog Group:** At some point, the lake association got a reputation of people looking to keep other cottagers in line. Not True. We are cottage owners and renters who love this lake. It is not our job to police the lake to see who is behaving and who is not. I want to enjoy my time at the lake too! We have no real authority except to promote ideas that are healthy for the lake and to advocate for our interests to authorities when needed. If you ask my opinion, I will give it but I will not force my opinion down your throat.

**Dues:** I do not believe that \$20 annually is a lot of money but I also know that there are plenty of expenses involved with owning a cottage. I can only hope that you will consider that \$20 is money well spent toward preserving the lake environment we all love so much.

So why do you join? Or why not? I am very interested in your reasons. What do you want the association to be involved in? You can e-mail me at [ljeffries@lbla.net](mailto:ljeffries@lbla.net)

Please consider joining the activities of the Lake Association but while we would love to see you,

you do not need to participate in our activities. Support us in caring for Lower Beverley. We have lots of fun and I have met many wonderful people along the way.

Sincerely,

Lynne Jeffries

## **BASS FISHING IN 2014**



This year the bass fishing season opens on the **3rd Saturday in June which means a June 21** start. Check the Ministry site for more information: [www.mnr.gov.on.ca](http://www.mnr.gov.on.ca)

## **IN MEMORIAM: LILY FAUST**

Lily Faust served twice as president of the lake association, and was instrumental in getting published our history of the lake, "Ripples Through Time: Memories of Lower Beverley Lake".



Lily helped build parade floats, organize fun events, and plan for the future of the association. Anyone who met her will remember her brilliant smile and her charming manner. This fall, Lily passed away after a long struggle with cancer. The world needs more people like Lily, willing to commit to the betterment of other's lives. She will be sorely missed around the lake. Our heartfelt condolences to her family.

## THIS AND THAT....

### Winners Again

The LBLA again won first prize for its' float in the 2013 Delta Fair Parade. Who can forget the "Lower Beverley Hillbillies"? Well done, y'all!



### Know thy Neighbour

How well do you know your neighbours at the lake? This was an issue for a lake couple one night last summer. A problem occurred in a neighbour's cottage and the OPP needed information to reach the cottage owner at home. Our couple knew only their neighbour's name but had no other info. If something happened to one of your neighbour's cottage would you know how to contact them? Would they know how to contact you? We encourage you to gather contact information about your neighbours on the card enclosed. Together we

can keep our lake community safe.

### Duck Hunting surprise!

Last Nov. 13th John Willows from LB1 prepared his float plane for take-off when a gust of wind caught the tail of the plane & flipped it forward & over into the water. John called 911. The OPP, Rideau Lakes Fire & Rescue, a helicopter & a Search & Rescue Hercules aircraft from Trenton came to the rescue. All eyes turned to the sky as the Hercules circled very low over the lake. Two parachutists were dropped & they & John were transported

safely to shore by Glenn Snyder who had been duck hunting that day. The plane was towed to shore & Transport Canada conducted an investigation. Big excitement in Delta that day!



### Ice out contest

Guess when the ice will melt on our lake! Look for the contest on our LBLA Facebook page & choose a date between March 20 & April 18 when you think ice out will occur in 2014. The closest person to guess the date wins a prize!

## ROAD CHAMPIONS

Road Champions keep track of changes in cottage ownership, get new owners' mailing info so we can communicate with them, hand out LBLA welcome gift bags & encourage new owners to join the association. Tell your road champion about any changes in ownership.

LB2: Pat Greenhorn (252D)

LB5: Laura & Rich White (520)

LB6: Don & Bev Wallis (605)

LB7: Sheila Riskie (92)

LB9: Mary VanVoorhis (LB9-1140)

LB10 & LB11 Barb Kirby (LB1148)

LB12: Lynne Jeffries (1267)

LB13: Keith Hubbard (1318)

Railroad St. Betty Penstone (29) & Barb Kirkham (22)

Cedar Sands: Don Palmer (310) & Dave Johnson (280)

Kendrick Lane: Sandy & Frank Ellis (940)

Lake Shore Road: Al Brown (2)

Coon's Road: Dann Michols (305B)

**Some roads still**

**need a champion.**

**Volunteer for your road!**

### IMPORTANT:

**Road Champions meeting**

**June 4 at 11 am, 1267 LB 12**

## SALAMANDER MAN



*The lake association strives to educate cottagers of all ages about the wonders of nature. Last summer, a talk about local snakes was a big hit.*

*This summer, you can learn all about salamanders by coming to meet Matt Ellerbeck at the Delta Township Park Bradford Pavilion at 10am on July 19.*

*Matt Ellerbeck has always loved reptiles and amphibians and has observed them in nature all his life. He has become a fulltime salamander advocate*

*and conservationist & received many awards. In 2013 he earned the Cataragui Conservation Foundation Education Award for outstanding work in contributing to the understanding and conservation of all life in the Cataragui region.*



## LET'S STAY IN TOUCH

The LBLA strives to stay in touch with you to keep you updated..

Our web site [www.lbla.net](http://www.lbla.net) contains calendar info, updates from local Townships, info about our lake environments, the lake history, etc.

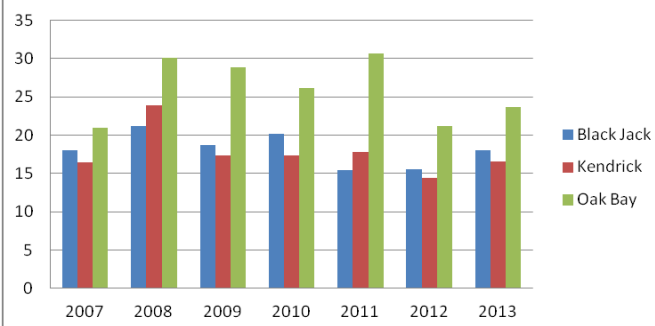
[www.facebook.com/LowerBeverleyLakeAssociation](http://www.facebook.com/LowerBeverleyLakeAssociation) is our Facebook page where you can contact other cottagers and read reminders from the LBLA.

We have e-mail addresses for less than half the residents on our list. Please add your e-mail when you join so we can communicate with you that way. We promise not to flood you with e-mails!

If you received this newsletter but no longer reside on the lake, please e-mail [ljeffries@lbla.net](mailto:ljeffries@lbla.net) to be removed from the list. Mailing this annual newsletter is the association's greatest expense. The Board will remove from its list those no longer residing on the lake or those who have not joined the LBLA in the last 15 years. If the newsletter is important to you please join LBLA!!

## WATER QUALITY

LBL Phosphorus Readings (ug/L)



(See secchi and depth level charts at [www.lbla.net](http://www.lbla.net))

## The lake in winter

For you who don't get to winter at Lower Beverley Lake, let me describe what it's like. In recent years, the lake iced over only after Xmas but 2013 proved colder and in the week of December 8 the lake froze over completely. It's always fascinating to watch ducks and swans claim the last open waters before escaping to warmer climates. A primeval groan accompanies the lake's freezing, seeming to come from the centre of the earth. We will hear this same majestic sound when ice-out occurs. From our residence in winter, we see only one light across the lake whereas in summertime many cottage lights twinkle across the water at night. And the one solar light we do see belongs to snowbirds who aren't even there!

When the temperatures drop & the ice freezes over, there is new life on the lake. People create hockey rinks, skidoos go dashing by, fishing huts crop up, and construction crews haul supplies out to islands to build docks or additions. One New Year's day as we were cozily eating lunch, a lone skater glided by keeping to the shoreline. Hands be-

hind his back, he effortlessly and elegantly circled the perimeter as if in a beautiful dream.

One day we spied across the frozen lake a pack of coyotes gorging themselves on the bloodied carcass of their kill, then bounding away in search of more bounty. Groups of three or four deer, a lone fox, a pack of dogs, a brave rabbit: they all use the ice as a new roadway in winter.

I admit to an ethical dilemma in wintertime. In the summer

if I looked out and saw a swimmer or boater in danger, I would not hesitate to boat out and save them. But when

I see skidoos or people out on the ice, I search my conscience as to what I would do if they fell through the ice. I think I would be too intimidated to go out there myself...

Our winter roads turn into snowy obstacle courses, or worse into treacherous icy raceways. People actually skated on the streets of Kingston on December 21 this past year! Freezing rain



seems to be on the upswing and has caused the cancellation of many events. My husband & I were once stuck with a scrumptious forty-person open-house buffet that none of our invitees were able to attend thanks to a severe snowstorm!

The Lights of the Season in the Delta Township Park are a welcome sight throughout December when thousands of Xmas lights illuminate the park & viewing them can be topped off by a hot meal in a local church basement. Taking a truck-pulled sleigh through the park to see the lights & enjoy a hot chocolate is a treat that hundreds of folks come to enjoy.

Do I appreciate winter at the lake? It is certainly tranquil and one can sit by the fireplace and read a book or look out at the falling snow that turns our world into a snow globe. Chickadees and blue jays come to eat the sumac seeds and every now and then a partridge jumps out of a bush to startle me when I go for a walk. We do entertain those other hardy people who confront this season at the lake: there is nothing like a game of cards to chase away the winter blues! There is a beauty to this season of ice and snow...but frankly, I'd rather be swimming!

L. Mantha

## TREASURE HUNTERS WANTED

Geo-caching is a worldwide treasure hunt happening all around you, even at Lower Beverley Lake! A geo-cache usually consists of a small waterproof container that holds a logbook and inexpensive trinkets or keepsakes. Caches can be located using a GPS device or a free mobile app on your smart phone. It's as simple as visiting [www.geocaching.com](http://www.geocaching.com) to register for a free account to start looking for caches near you.

Anyone who is interested in joining the hunt or in learning more about geo-caching is welcome to phone Sharon Olivo at 613 928-2329 for more information. If enough people show an interest, a Geo-caching Meet and Greet can be arranged followed by a short local caching field trip.



## Your 2014 LBLA calendar for fun at the lake!

- **June 4** Road Champions meeting, 11am at 1267 LB 12
- **July 9** LBLA AGM at 6:30 at Delta Fairgrounds Hall
- **July 19** 'Salamander Man' Matt Ellerbeck, Delta Township Park, Bradford Pavilion at 10am
- **July 26** Delta Fair Parade (Theme of Delta in the 1920's) at 2pm
- **August 7** (or Aug. 8 rain date) Meet to clean up the lake at Delta Township Park boat ramp, at 10am
- **August 9** LBLA annual picnic at Kendricks Park at 3pm



# Many thanks to our wonderful sponsors!

LBLA Loon Call 2014

DENAUT MANSION COUNTRY INN



Mariska & Theo Kriebel

5 Mathew Street  
Delta K0E 1G0  
Ontario Canada

t: (613) 928 2588  
f: (613) 928 2153  
w: www.denautmansion.com  
e: goodtimes@denautmansion.com



lyndhurst  
dental  
centre

bright smiles for all ages

443 Lyndhurst Road

Tel. (613) 928-2326

Fax (613) 928-2157

Email appts\_ldc@xplornet.com

Web www.lyndhurstdental.com



When swimming through the gentle undulating surfaces of lakes I find inspiration in the movement of water. Sometimes I think about the journey the water has traveled, re-connecting me to the larger cycles of nature.

Janet Echelman



Garry & Susie  
Mensen  
And Family

161 County  
Road 42,  
R.R.#1 Delta Ont.,  
K0E 1G0

Tel: 613 928-2555



Gordanier Sales Limited

20 Main St., Box 219  
Elgin, Ontario K0G 1E0  
Tel: (613) 359-5227



Wendy's Country  
Market

151 Fortuneline Rd  
Lyndhurst, Ontario  
613-928-2477

www.wendyscountrymarket.com

The Green Gecko  
Truly Unique Shopping!

436 Lyndhurst Rd  
P.O. Box 159  
Lyndhurst, Ontario  
K0E 1N0  
613.928.1196  
info@greengecko.ca  
www.greengecko.ca

f www.facebook.com/thegreengecko

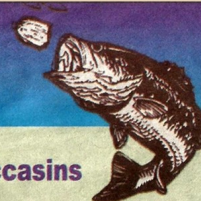


WING'S  
LIVE BAIT  
& TACKLE

Fishing • Hunting • Moccasins

OPEN ALL YEAR ROUND!

413 Lyndhurst Rd, Lyndhurst  
613-928-2382 • siderisjp@sympatico.ca



**Home**  
building centre

www.homehardware.ca

T 613 928 2028  
F 613 928 2818

P.O. Box 130  
397 Lyndhurst Rd.  
Lyndhurst  
Ontario  
K0E 1G0



Dr. Catherine McGregor

TMJ & Sleep Therapy Centre  
of Eastern Ontario

Non-surgical Therapies  
for an Improved Quality of Life

P.O. Box 189, 445 Lyndhurst Road, Lyndhurst, ON K0E 1N0  
Tel 613.928.2316 Fax 613.928.2157  
Email cathy\_mcgregor@me.com

www.tmjssleepontario.com

**WE'VE GOT YOUR LUMBER:**  
Home Owners helping homeowners



REALTOR

**TERRI WOOD**  
Broker

Direct (613) 540-2838

e-mail: twood@bickertonbrokers.com

(613) 382-2131 Ext. 207 • (800) 932-2131 • Fax (613) 382-7271

**BICKERTON**  
BROKERS LIMITED BROKERAGE

P.O. Box 219, 170 King St. E.  
Gananoque, ON K7G 2T7  
www.bickertonbrokers.com



Office: (613) 924-9141  
Fax: (613) 924-9901  
email: jhudson@ripnet.com  
www.burthudson.com

**JUSTIN HUDSON**  
BROKER OF RECORD

10 Main Street East  
P.O. Box 474, Athens, ON K0E 1B0

